

Focal Point is a powerful, yet cost-effective access control system to help systems of all sizes protect their valuable people, assets and property. With a fixed cost per door, POE support and unlimited workstations, Focal Point uses existing IT resources to help you automate and control your facility. Focal Point supports single door networked access controllers and multi-door HID VertX controllers, as well as all reader technologies. With Focal Point you get:

## Simplicity

- ▶ Simple and quick installation
- ▶ Large icons and user-friendly graphics
- ▶ Easy to understand and operate

## Scalability

- ▶ Ideal for systems of all sizes... 1 door to thousands
- ▶ Fixed cost per door makes it easy to grow with your business
- ▶ Unlimited workstation support for multi-property environments

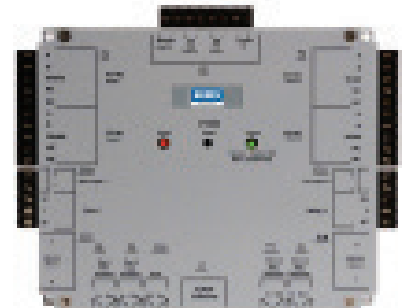
## Economy

- ▶ Uses existing IT investments and network infrastructure
- ▶ Low initial cost with CAT5/6 cabling
- ▶ No per seat license fee
- ▶ POE support reduces wiring costs by powering controller, reader and lock over one wire

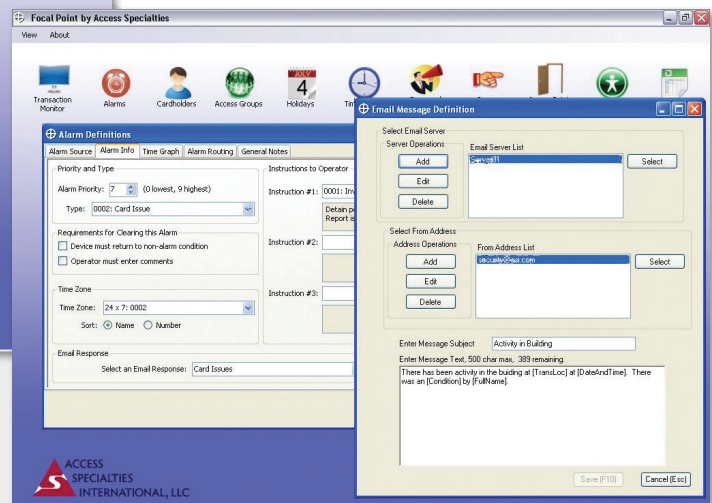
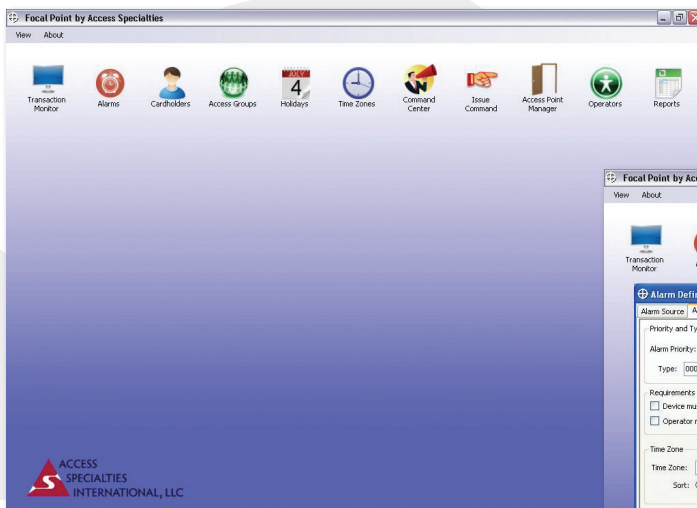
INNOVATIVE IP ACCESS  
CONTROL THAT'S SIMPLE,  
EFFECTIVE AND SCALABLE



*Edge EVO Single-door Controller*



*VertX V1000 Network Controller*

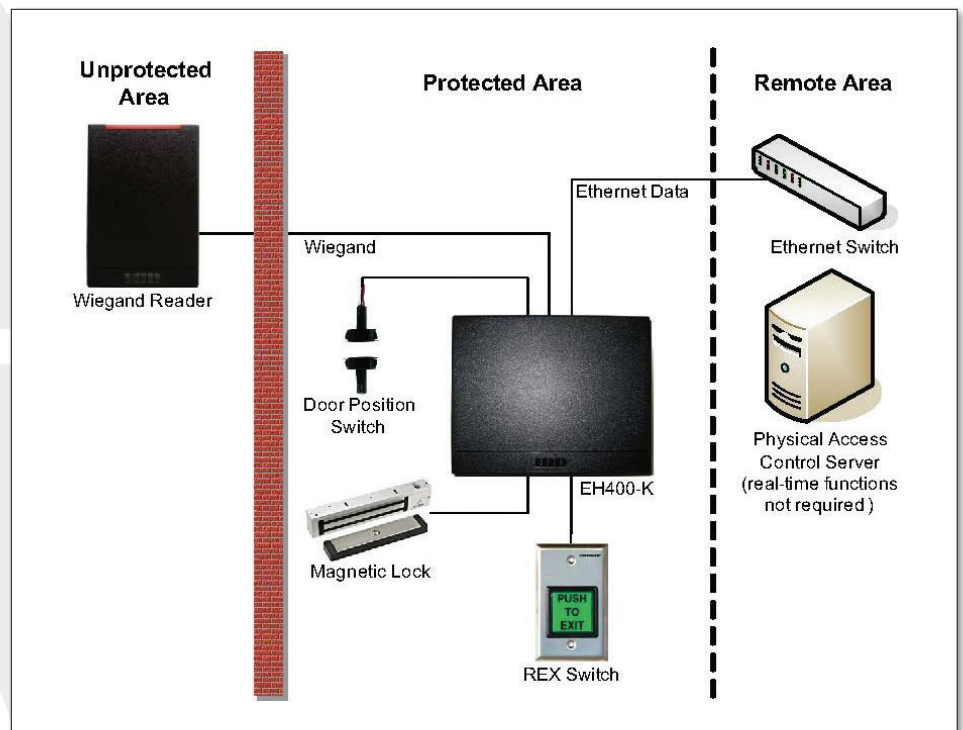


## Customer-Driven Features

- ▶ Powerful access control capabilities through easy to manage groups
- ▶ Building automation through scheduled and conditional response commands, user-definable inputs/outputs
- ▶ Exceptional visual clues such as dynamic device status, large icons, color-coded transactions and time graphs
- ▶ Custom Report Generator provides powerful reporting, custom reports and audit trail
- ▶ Unlimited user-definable fields and look-up drop-boxes
- ▶ Database Partitioning provides access control by zones for managing multiple locations or separating user access to sensitive locations
- ▶ Controls and powers all access devices at the door including strikes and mag locks
- ▶ Distributed intelligence at the door, fully functioning offline when not connected to host supporting up to 99,999 transactions
- ▶ E-mail response to user-defined alarms and other events
- ▶ Powerful alarm monitoring and routing for instant notification of system exceptions
- ▶ Robust SQL Database Engine, MSDE included
- ▶ Supports multiple facility codes and card formats and all reader technologies
- ▶ Custom Operator permissions to restrict access to devices and information

## Integrated Photo ID and Badge-Creation Capabilities

- ▶ This optional feature allows you to create professional full-color ID badges with one easy step with one database. Supports all major card printers and manufacturers.



*Manufacturing Access Control Systems for Over 25 Years*

**Call 800-332-1013 or visit [access-specialties.com](http://access-specialties.com)**